

KEEPING YOU SAFE IN TIER TWO



SINGLE HOUSEHOLDS ONLY INSIDE

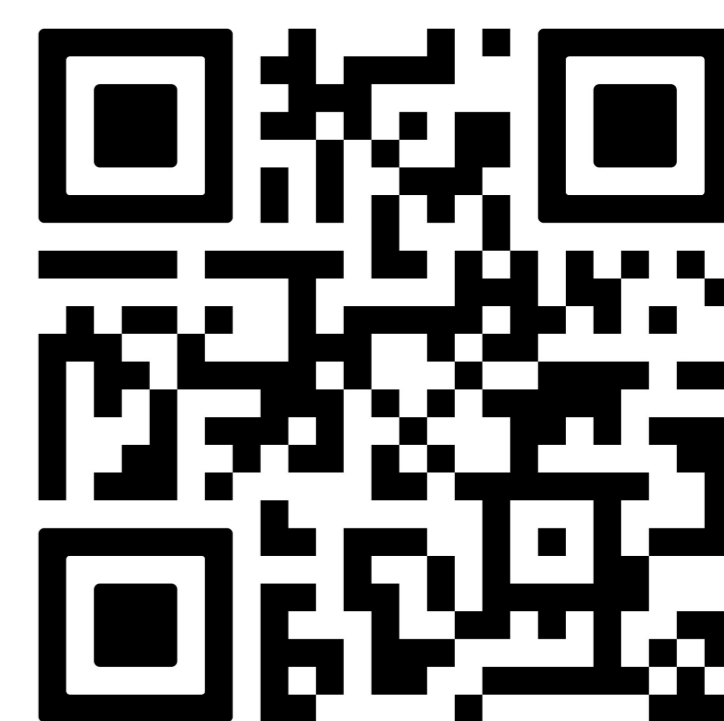
Inside we can only allow groups from single households.



WELCOME BACK!

Stay safe when visiting us, and follow the guidance in place. To see everything we've done, follow the QR code below or visit - www.makinglifepeachy.com/your-visit/

Please be aware alcohol can only be served with a substantial meal.



THE RULE OF SIX OUTSIDE



Following the Government guidance, group size must not exceed six guests, and please avoid mingling with others outside your group.

Please wear a face covering when you're not seated.



CONTACT DETAILS REQUIRED

To help keep everyone safe all team members and visitors must sign in. Government guidance requires us to take contact details of one guest in each party. Your details will be stored safely in OpenTable, and we will only share them with NHS Test and Trace, if asked, when another guest tests positive for Coronavirus.

STAYING COVID-19 SECURE

There's many ways we've made the pub safe for our guests and team, and have complied with the Government guidance on managing risk.

You can also scan this QR code with your NHS COVID-19 App to check-in

DOWNLOAD THE NHS COVID-19 APP

Available on the App Store | GET IT ON Google Play

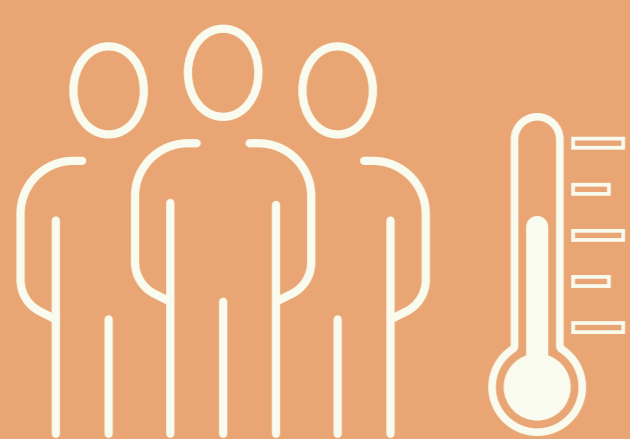


HAND SANITISER STATIONS AROUND THE PUB INCLUDING ENTRANCES AND EXITS



THOROUGH CLEANING & HANDWASHING PROCEDURES IN PLACE

WE HAVE ARRANGED SEATING TO MAINTAIN SOCIAL DISTANCING, AND USE PERSPEX SCREENS TO MANAGE TRANSMISSION



TEAM ARE CHECKED TO BE FIT FOR WORK BEFORE EACH SHIFT, INCLUDING TEMPERATURE CHECKS

WE ARE ONLY ACCEPTING CARD PAYMENTS



ORDER ON MOBILE TECHNOLOGY TO REDUCE GUEST AND TEAM INTERACTION

ALL TEAM HAVE BEEN FULLY COVID-TRAINED

